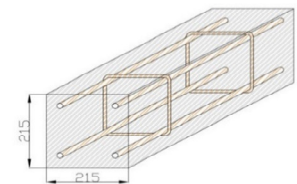
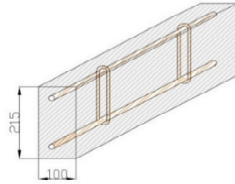


Reinforced Concrete Lintels Load Table



215x100mm

215x215mm

Span	215x100mm					215x215mm				
	Working Load (kN/m)	Ultimate Load Capacity [kN/m]	Bottom Rebar	Top Rebar		Working Load (kN/M)	Ultimate Load Capacity [kN/m]	Bottom Rebar	Top Rebar	
1.00m	69.14	140	H12	H10		138.27	280	2H12	2H10	
1.25m	45.7	92.5	H12	H10		88.88	180	2H12	2H10	
1.50m	35.65	72.2	H12	H10		53.23	107.8	2H12	2H10	
1.75m	35.65	72.2	H16	H12		52.84	107	2H16	2H12	
2.00m	26.57	53.8	H16	H12		41.04	83.1	2H16	2H12	
2.25m	-	-	18.76	38	H20	H12	31.7	64.2	2H20	2H12
2.50m	-	-	13.14	26.6	H20	H12	24.84	50.3	2H20	2H12
2.75m	-	-	11.4	23.1	H25	H16	24.79	50.2	2H25	2H16
3.00m	-	-	9.22	18.68	H25	H16	24	48.6	2H25	2H16
3.25m	-	-	7.16	14.5	H25	H16	19.26	39	2H25	2H16
3.50m	-	-	5.93	12	H25	H16	14.86	30.1	2H25	2H16
3.75m	-	-	4.99	10.1	H25	H16	11.36	23	2H25	2H16
4.00m	-	-	4	8.12	H25	H16	8.74	17.7	2H25	2H16
	-	-	-	-						

Design I.S. EN 845-2 2013  
 Concrete Strength C40 at 28 days  
 Steel Strength Bars 500 Mpa, Links 460 Mpa  
 Load UDL Dead factor 1.35 + UDL Imposed factor 1.50  
 Deflection Span / 500

Cover 40mm to the main reinforcement  
 Links 2 legs H6 at 150mm first 3 links behind support edge at both lintel ends, than H6 at 200mm

Bottom Rebar	H12	H16	H20	H25
Min. bearing B	200mm	250mm	300mm	350mm